

**education | research| practice**



ARCHITECTS' COUNCIL OF EUROPE  
CONSEIL DES ARCHITECTES D'EUROPE

**Johan De Walsche**

University of Antwerp

**EAAE Education Academy**

**education | research | practice**





**education | research | practice**

**distinct sites in an undivided continuum**

**E A A E A C A D E M Y on E D U C A T I O N**



## **PLATFORM**

collection, exchange and dissemination of knowledge and experience on architectural education  
mutual inspiration through good-practices and thought-provoking concepts;

## **RESEARCH** on/in architectural education

educational research in architecture/research in architectural education;  
collecting, initiating and discussing;

## **THINK-TANK**

articulation and promotion of common concerns and interests  
reflection upon and responding to topical issues,  
revealing and underpinning possible positions.





**E A A E A C A D E M Y on E D U C A T I O N**

**Changing roles of the architect**

**Roots and Traditions**

**Pedagogies**



**teaching**

**practice**



**teaching**

**research**

**practice**

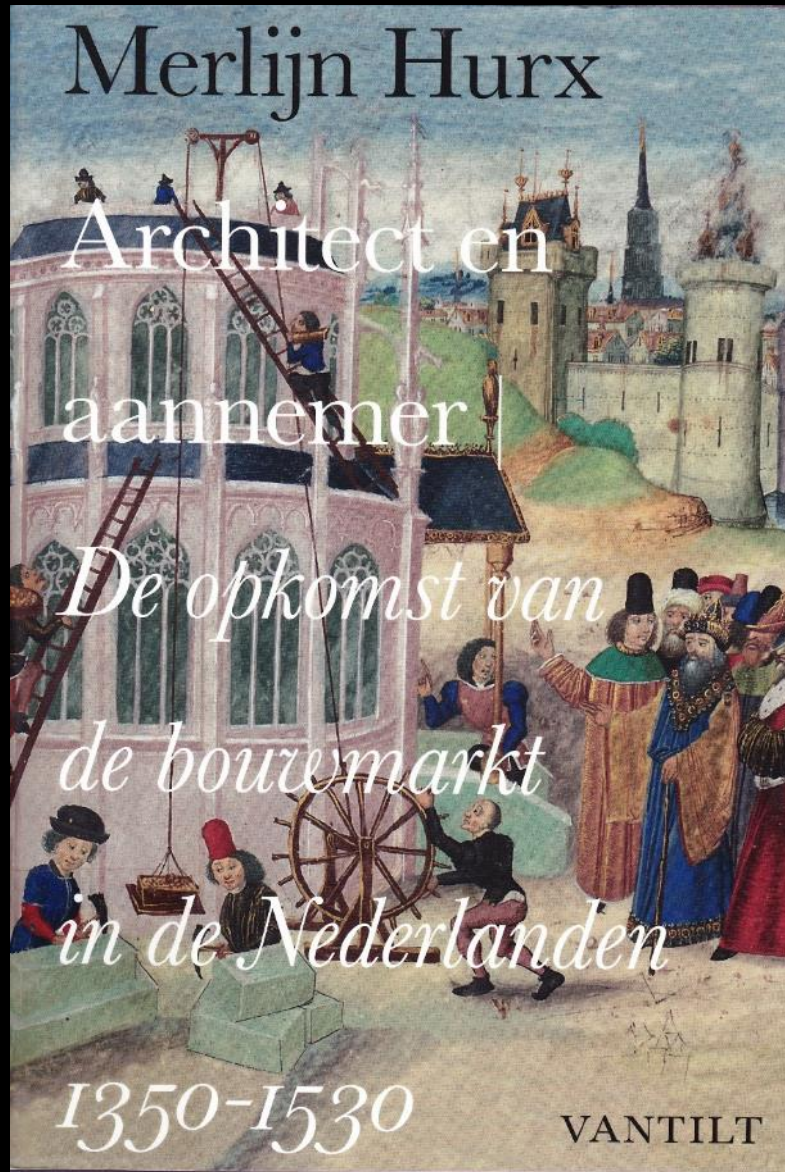
Merlijn Hurx

Architect en  
aannemer

*De opkomst van  
de bouwmarkt  
in de Nederlanden*

1350-1530

VANTILT

















# EAAE\_Charter on Architectural Research

*Approved by the EAAE General Assembly, Chania, 03 September 2012*

## **architecture as a discipline and a field of knowledge**

Architecture is the discipline devoted to the creation, transformation and interpretation of the built environment and the articulation of space at various scales. It involves art, science, design, conservation, planning, management, construction and representation, addressing issues of ethics, aesthetics, culture and society. The discipline of architecture engages with the cultural, socio-economic and environmental conditions affecting our quality of life.

Architecture is facing challenges of climate change, globalization, urbanization and social transformation that necessitate vital research. In parallel, the horizons of architectural experimentation are expanding rapidly with the development of new technologies and media. If we are to understand, explain, anticipate and influence the consequences of these changes, research is essential. Moreover, research is essential for the continued expansion of the discipline's knowledge base, the development of spatial understandings, and the improvement in teaching, learning and practice of architecture.

academic

academic

level 7 (EQF)



academic

level 7 (EQF)

research-based

academic

level 7 (EQF)

research-based

Research-Teaching Nexus

academic

level 7 (EQF)

research-based

Research-Teaching Nexus

academic research

academic

level 7 (EQF)

research-based

Research-Teaching Nexus

academic research

architectural research

academic

level 7 (EQF)

research-based

Research-Teaching Nexus

Practice-Teaching Nexus

academic research

architectural research



academic

level 7 (EQF)

research-based

design-driven

Research-Teaching Nexus

Practice-Teaching Nexus

academic research

architectural research

academic

level 7 (EQF)

?

research-based

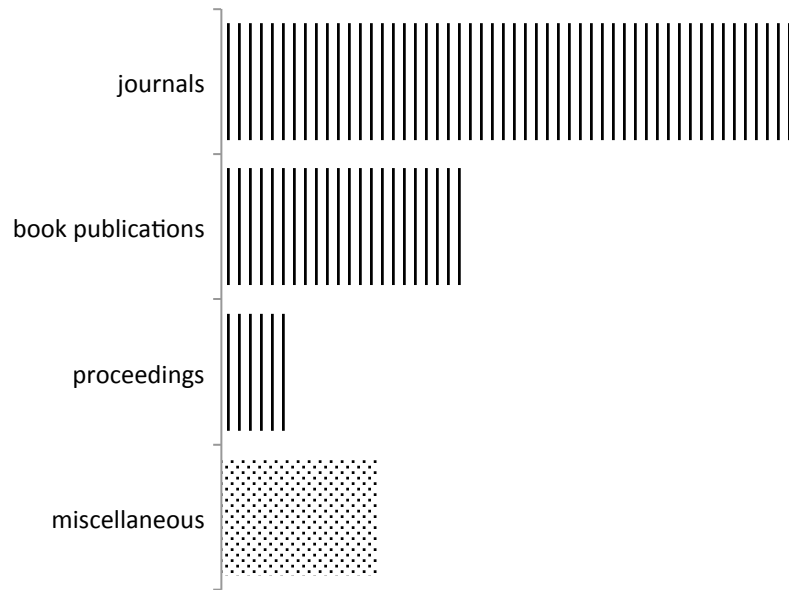
design-driven

Research-Teaching Nexus

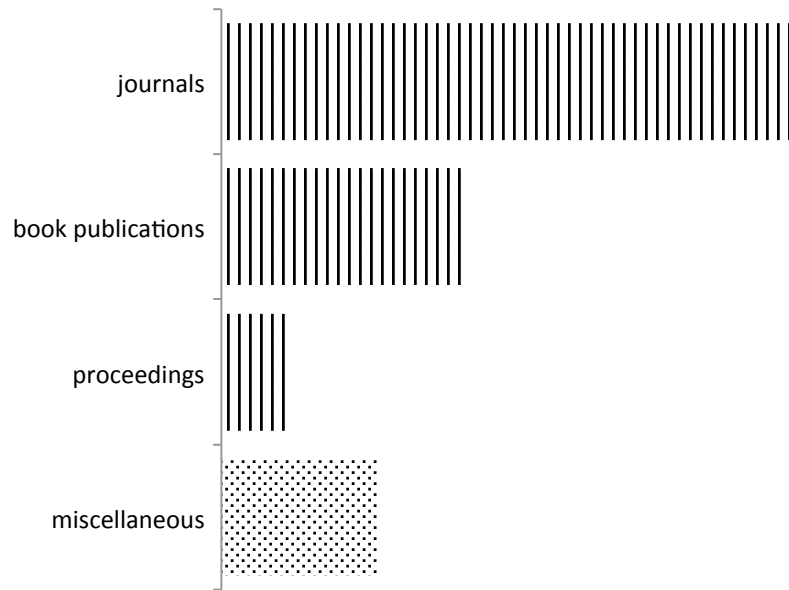
Practice-Teaching Nexus

academic research

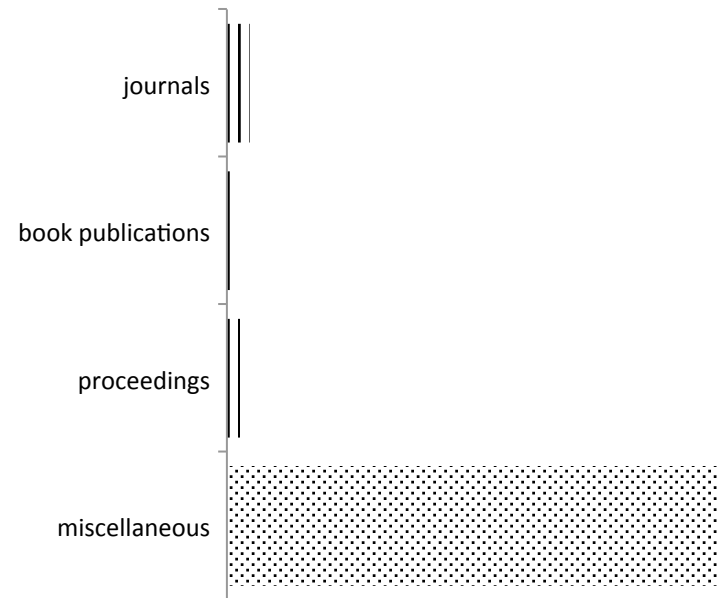
architectural research



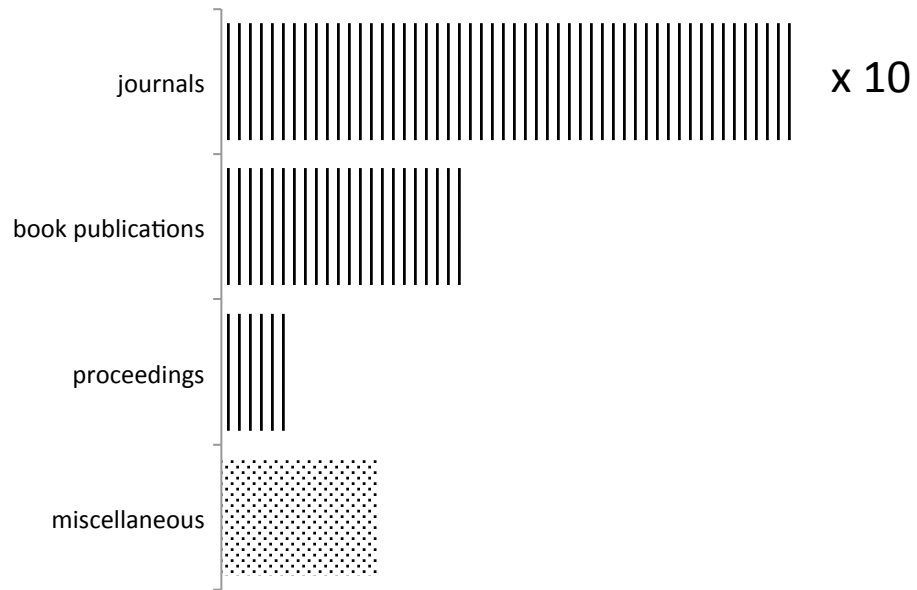
typical average publication profile of a university (Flanders 2014)



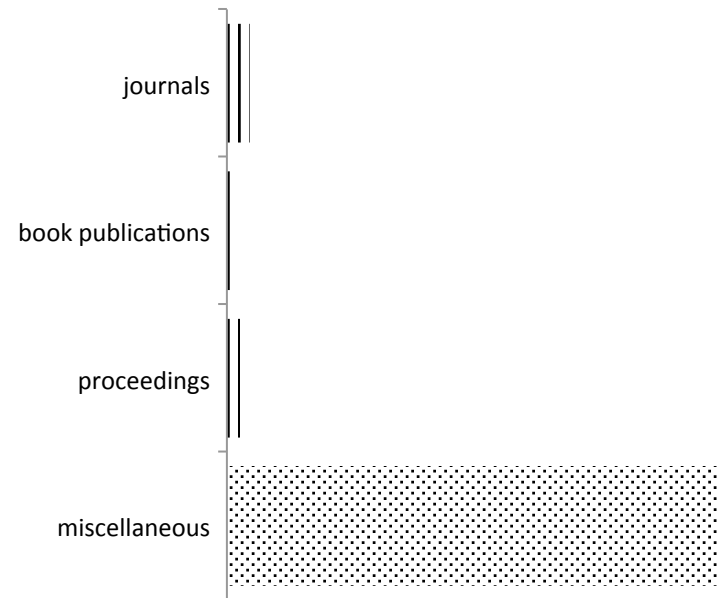
typical average publication profile of a university (Flanders 2014)



publication profile of a corps of studio teachers at a university (2014)

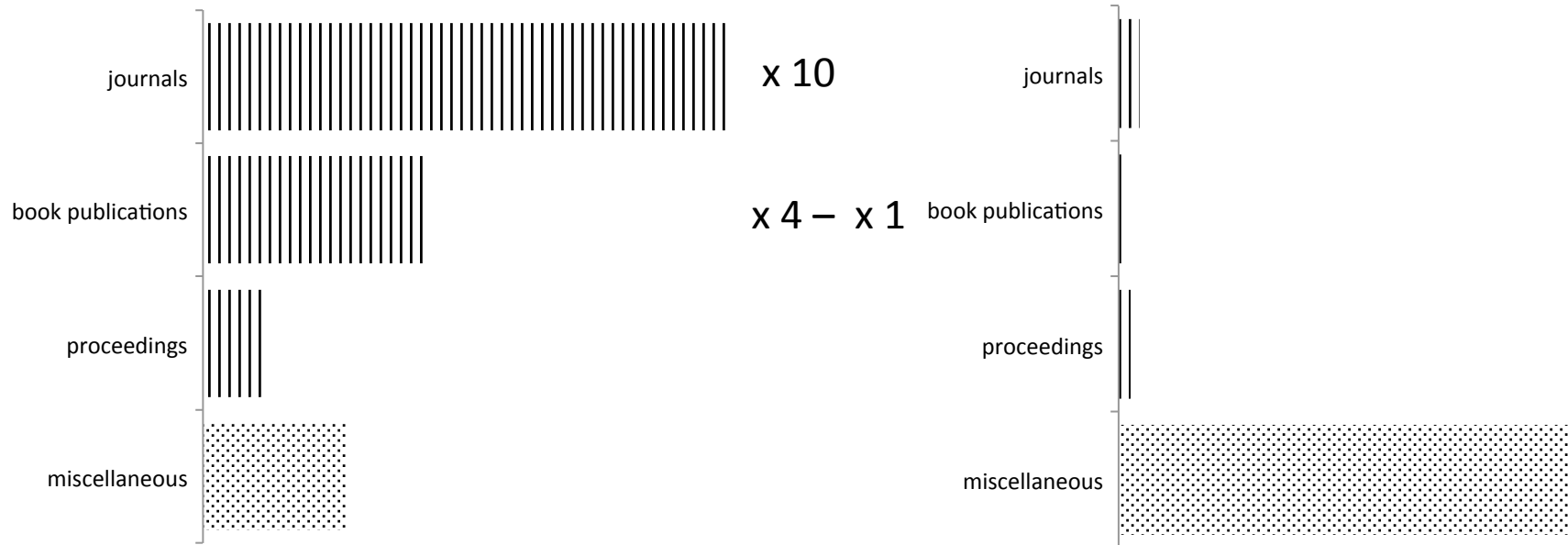


typical average publication profile of a university (Flanders 2014)



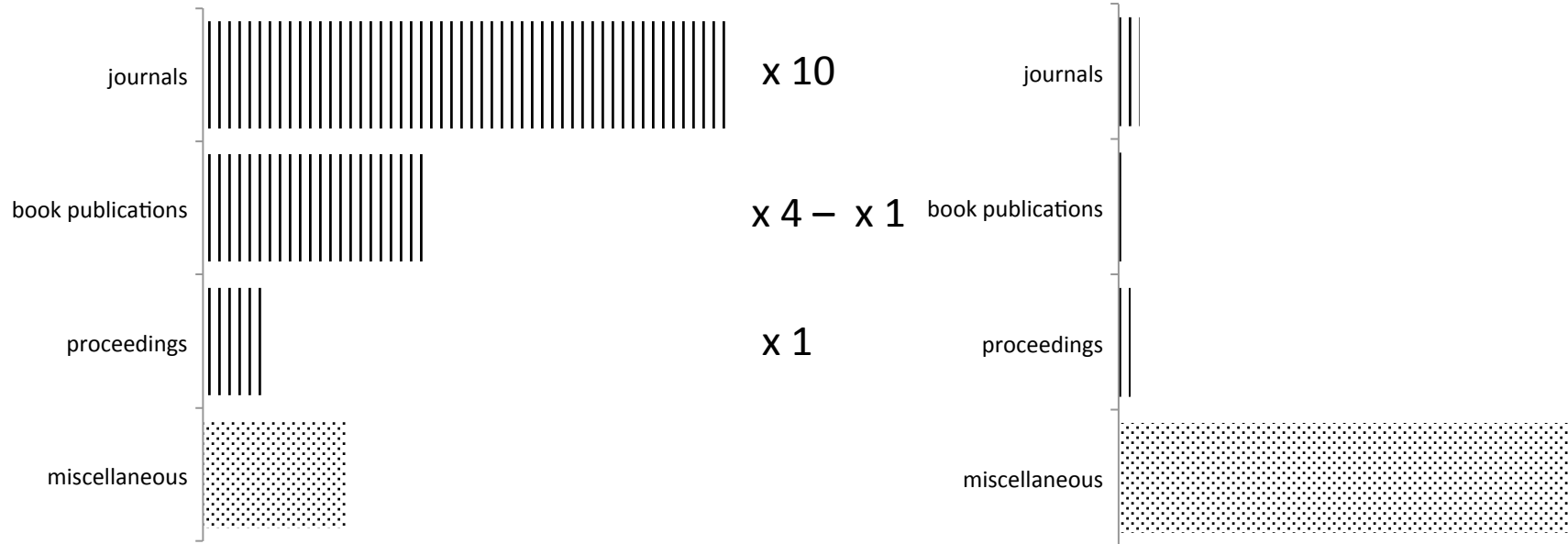
publication profile of a corps of studio teachers at a university (2014)





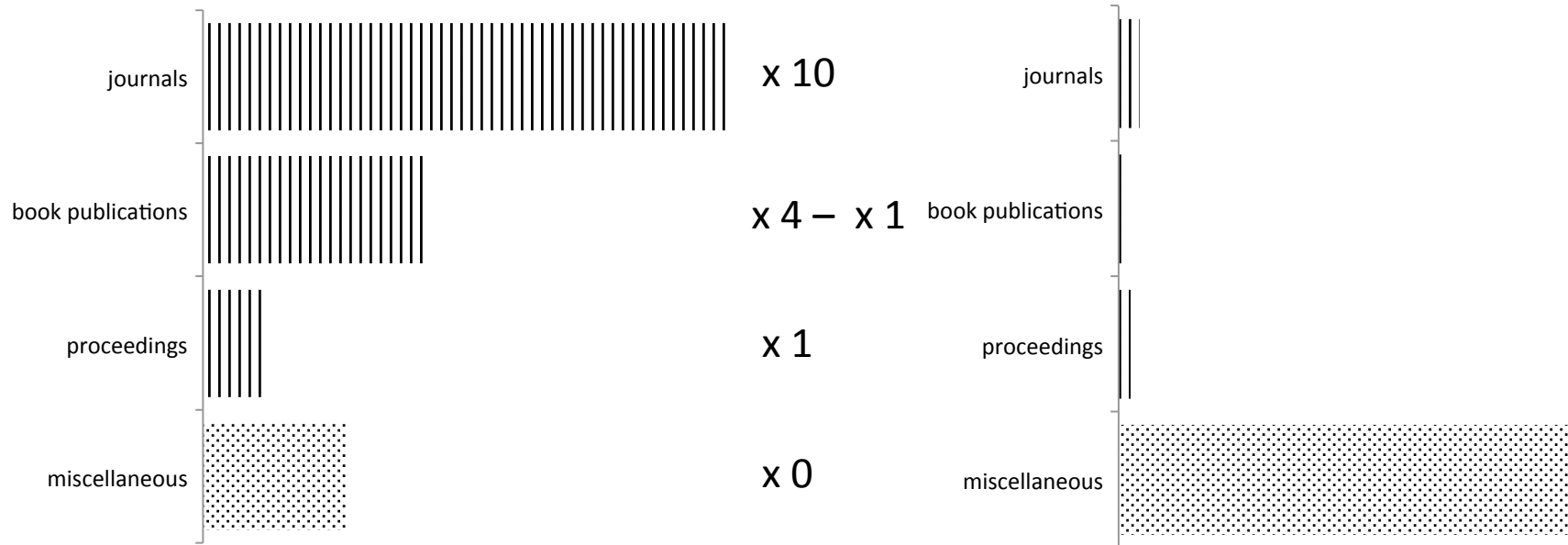
typical average publication profile of a university (Flanders 2014)

publication profile of a corps of studio teachers at a university (2014)



typical average publication profile of a university (Flanders 2014)

publication profile of a corps of studio teachers at a university (2014)



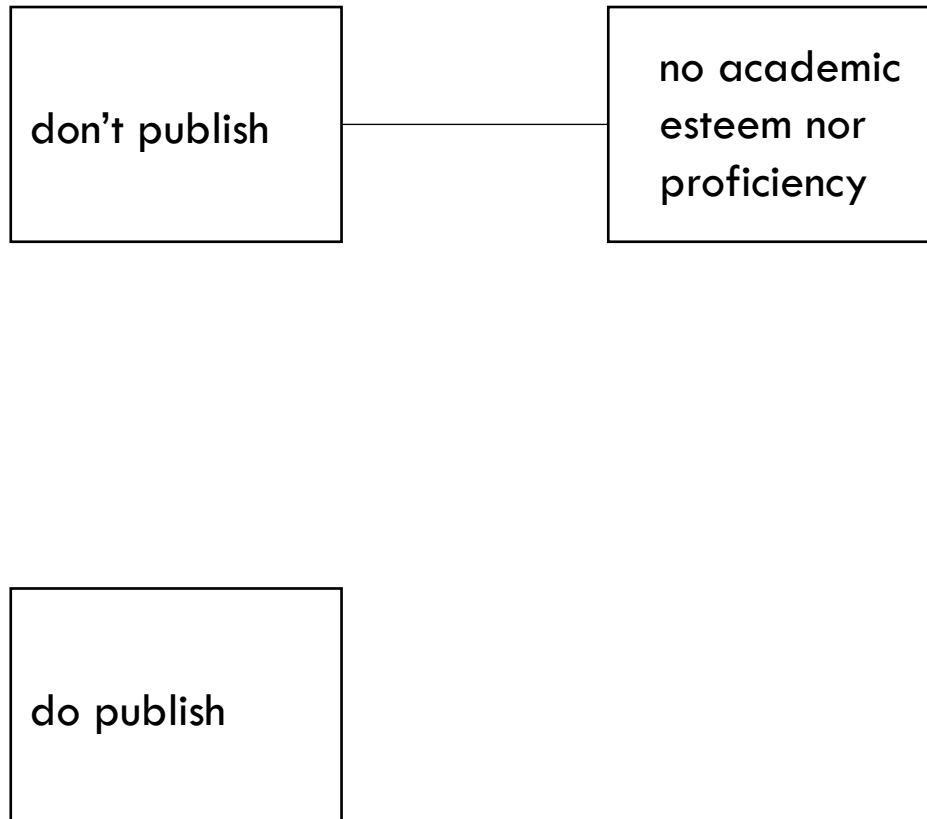
typical average publication profile of a university (Flanders 2014)

publication profile of a corps of studio teachers at a university (2014)

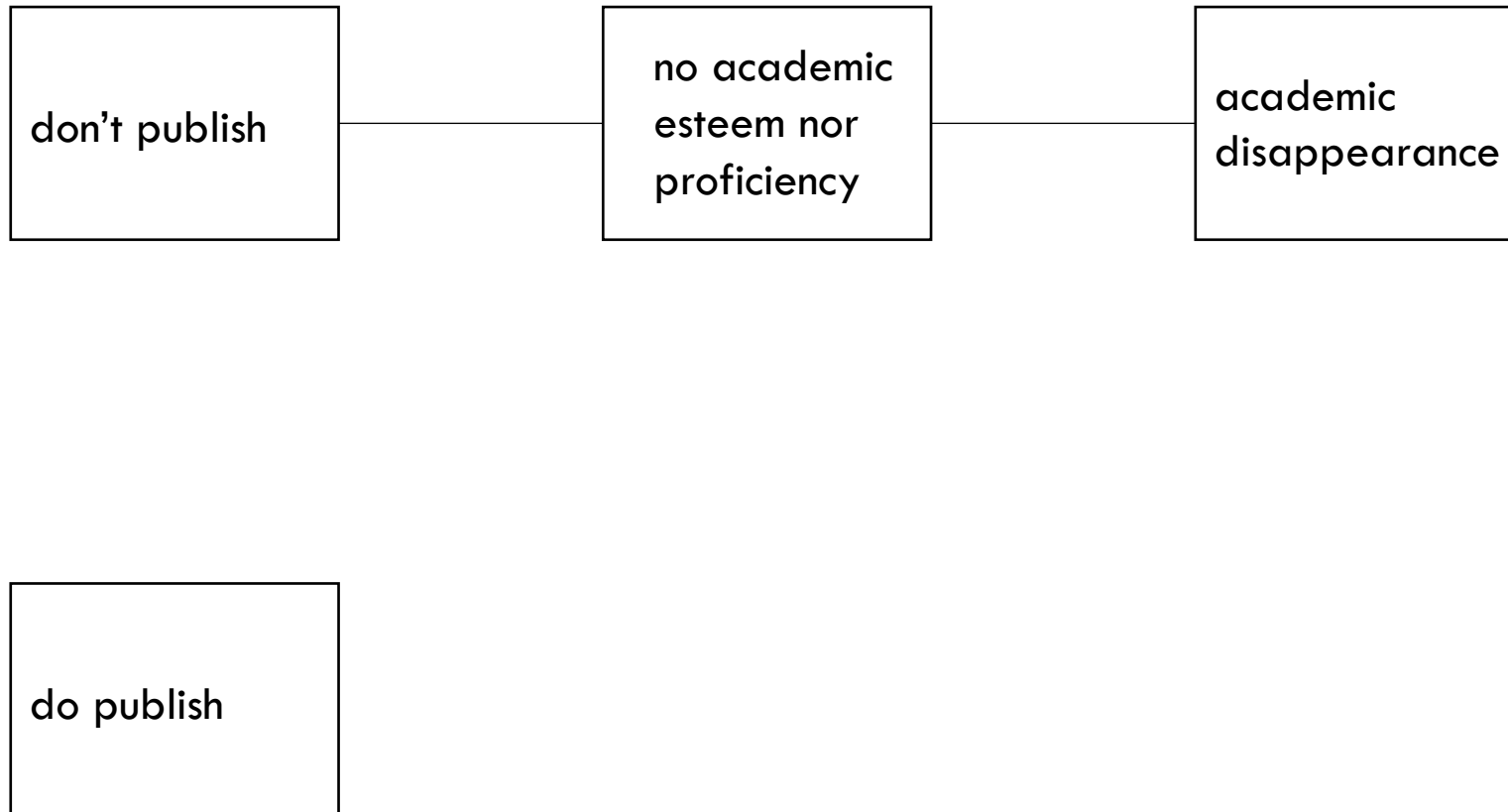
don't publish

do publish

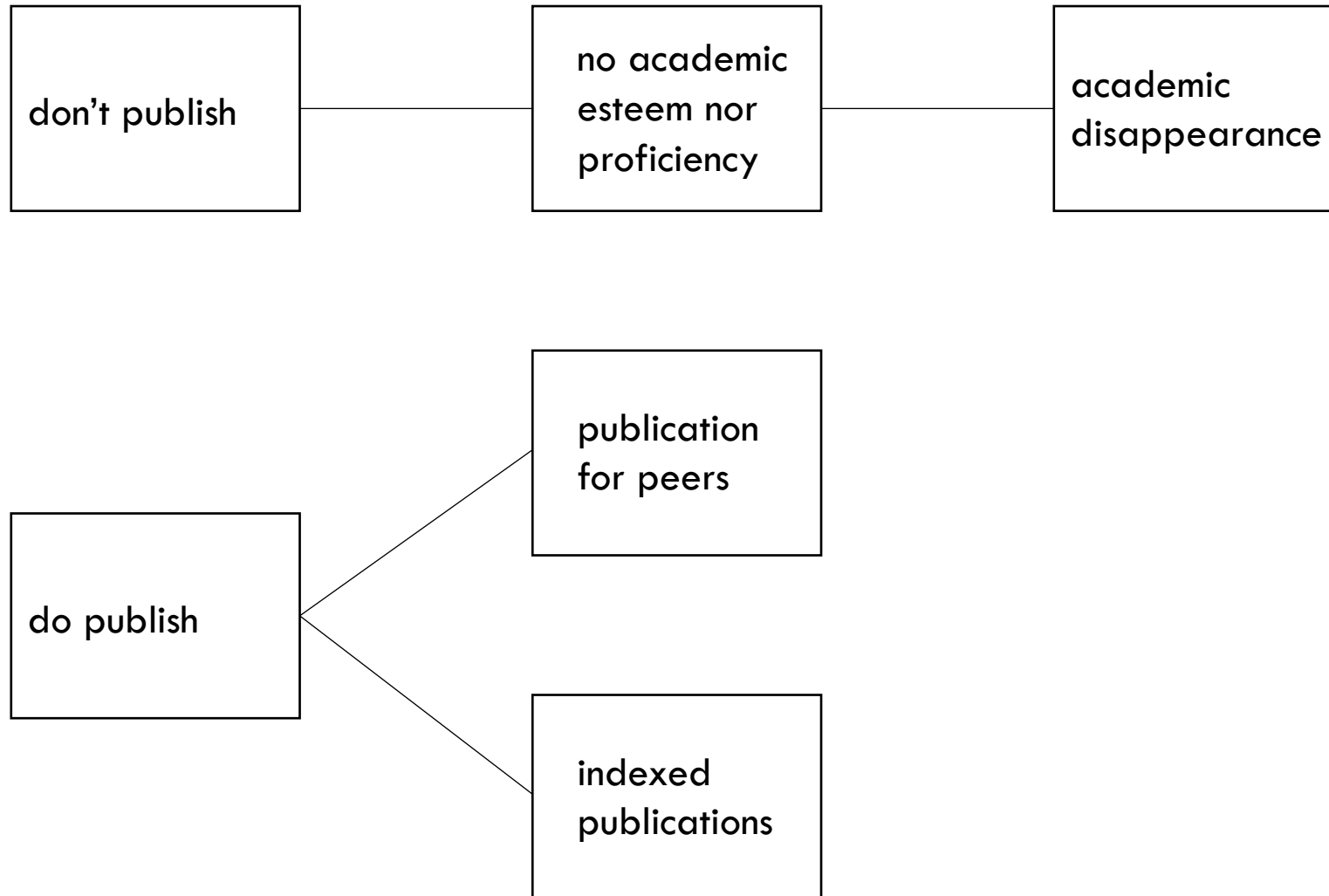
after: van der Hoeven, F. (2011). Mind the evaluation gap: reviewing the assessment of architectural research in the Netherlands. *arq: Architectural Research Quarterly*, 15(02), 177-187.



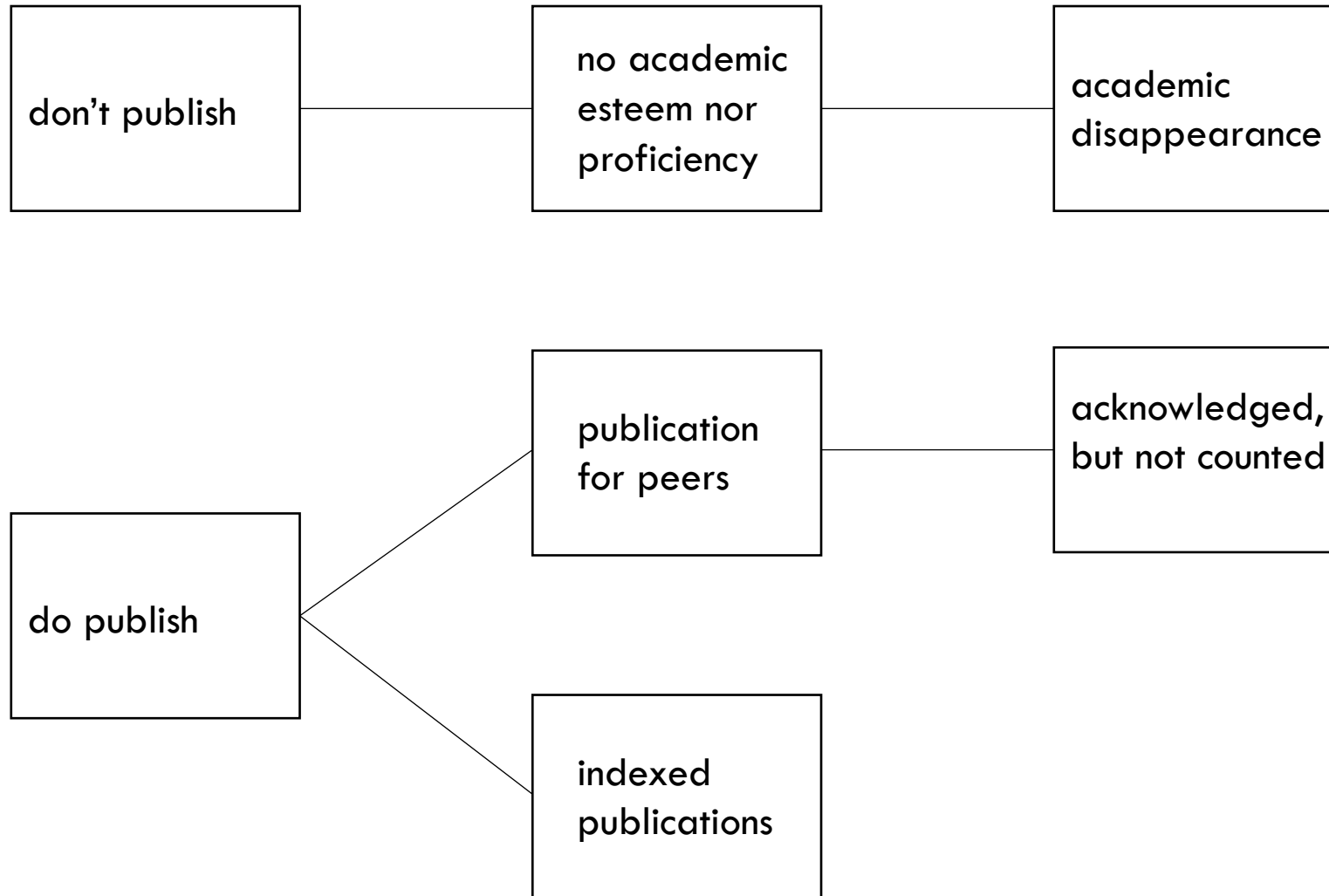
after: van der Hoeven, F. (2011). Mind the evaluation gap: reviewing the assessment of architectural research in the Netherlands. *arq: Architectural Research Quarterly*, 15(02), 177-187.



after: van der Hoeven, F. (2011). Mind the evaluation gap: reviewing the assessment of architectural research in the Netherlands. *arq: Architectural Research Quarterly*, 15(02), 177-187.

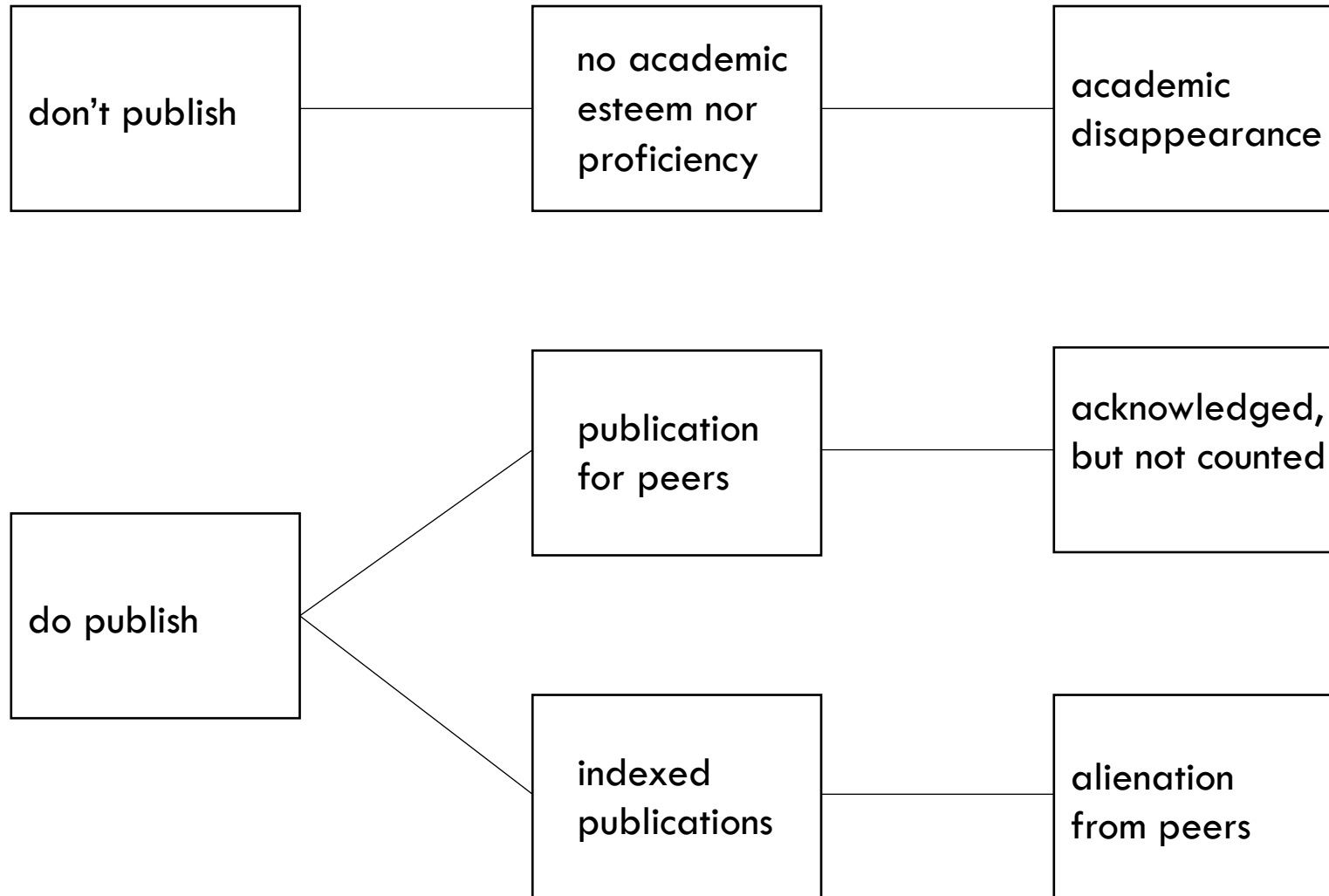


after: van der Hoeven, F. (2011). Mind the evaluation gap: reviewing the assessment of architectural research in the Netherlands. *arq: Architectural Research Quarterly*, 15(02), 177-187.



after: van der Hoeven, F. (2011). Mind the evaluation gap: reviewing the assessment of architectural research in the Netherlands. *arq: Architectural Research Quarterly*, 15(02), 177-187.





after: van der Hoeven, F. (2011). Mind the evaluation gap: reviewing the assessment of architectural research in the Netherlands. *arq: Architectural Research Quarterly*, 15(02), 177-187.

*“You are all out of touch with reality”, says the practitioner.*

*“You are muddied by the market and philistinism”, says the academic.*

*There is unnecessary antipathy of the one camp to the other , which means that in the end the worth of research in developing a sustainable knowledge base is devaluated [...].*

*(Till, 2007, p4)*

“According to the 21st century’s most widely consulted backlit manuscript – Wikipedia - the term ‘research’ was first used in 1577.

While its occurrence for the next several hundred years must have been regarded as unusual, today the word is used more frequently than Michael Moore eats McDonald’s hamburgers.

The last thing that Chris and I would ever want is for one of our students to be ‘researching’.[...]

We’d put ‘researching’ on par with ‘rendering’ – another self-delusional practice of grandeur or hypertrophic activity akin to poetry or pantomime”

Neither Chris nor I could imagine two less compatible tasks than research and design. As Mark [...] said to me the other day, ‘Gentlemen, don’t do research’.

Pierce, C. (2013). A flea in our ear *AArchitecture 18* (pp. 2).



Wilhelm von Humboldt



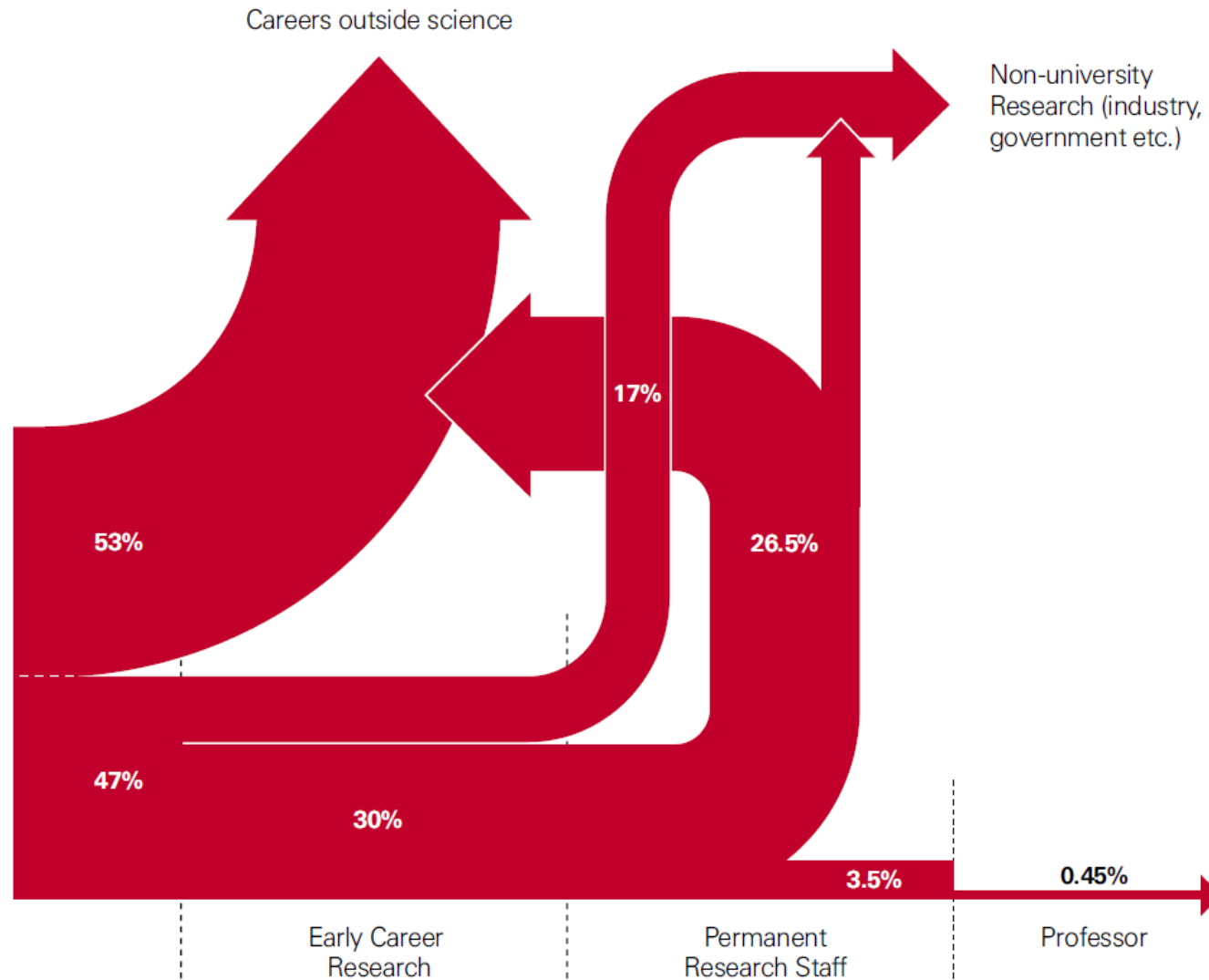
John Henry Newman



# The new production of knowledge

The  
dynamics  
of  
science  
and  
research  
in  
contemporary  
societies

Michael Gibbons  
Camille Limoges  
Helga Nowotny  
Simon Schwartzman  
Peter Scott  
Martin Trow



*"This diagram illustrates the transition points in typical academic scientific careers following a PhD and shows the flow of scientifically-trained people into other sectors. It is a simplified snapshot based on recent data from HEFCE33, the Research Base Funders Forum34 and from the Higher Education Statistics Agency's (HESA) annual Destinations of Leavers from Higher Education' (DLHE) survey. It also draws on Vitae's analysis of the DLHE survey35. It does not show career breaks or moves back into academic science from other sectors." (The Royal Society, 2010).*

# OMA OFFICE WORK SEARCH

OMA's completed projects include the Faena District in Miami (2016); Pierre LeSonde Pavilion, a new building for the Musée national des beaux-arts du Québec (2016); Impulse, new home for Rotterdam's municipal offices (2015); Carag, Musée d'Art Contemporain de Montréal (2015); Fondazione Prada in Milan (2015); G-Star Headquarters in Amsterdam (2014); Shenzhen Stock Exchange (2013); De Rotterdam, a large mixed-use tower in the Netherlands (2013); CCTV Headquarters in Beijing (2012); New Court, the headquarters for Rothschild Bank in London (2011); Milstein Hall at Cornell University in Ithaca, New York (2011); and Maggie's Centre, a cancer care centre in Glasgow (2011). Earlier buildings include Casa da Música in Porto (2005), Seattle Central Library (2004), and Netherlands Embassy in Berlin (2003).

AMO often works in parallel with OMA's clients to fertilize architecture with intelligence from this array of disciplines. This is the case with Prada: AMO's research into identity, in-store technology, and new possibilities of content-production in fashion helped generate OMA's architectural designs for new Prada epicenter stores in New York and Los Angeles. In 2004, AMO was commissioned by the European Union to study its visual communication, and designed a coloured "barcode" flag - combining the flags of all member states - that was used during the Austrian presidency of the EU.

AMO has worked with Universal Studios, Amsterdam's Schiphol airport, Heineken, Ikea, Condé Nast, Harvard University and the Hermitage. It has produced exhibitions at the Venice Architecture Biennale, including The Gulf (2006), Cronocaos (2010) and Public Works (2012) and for Fondazione Prada including When Attitudes Become Form (2012) and Serial and Portable Classics (2015). AMO, with Harvard University, was responsible for the research and curation of the 14th Venice Architecture Biennale and its principle publication Elements. Other notable projects are a plan for a Europe-wide renewable energy grid; Project Japan, a 720-page book on the Metabolism architecture movement (Taschen, 2010); and the educational program of Strelka Institute in Moscow.



# OMA OFFICE WORK RESEARCH

OMA's completed projects include the Faena District in Miami (2016); Pierre Lessonde Pavilion, a new building for the Musée national des beaux-arts du Québec (2016); Impulse, new home for Rotterdam's municipal offices (2015); Carag Museum of Contemporary Art in Moscow (2015); Fondazione Prada in Milan (2015); G-Star Headquarters in Amsterdam (2014); Shenzhen Stock Exchange (2013); De Rotterdam, a large mixed-use tower in the Netherlands (2013); CCTV Headquarters in Beijing (2012); New Court, the headquarters for Rothschild Bank in London (2011); Milstein Hall at Cornell University in Ithaca, New York (2011); Música **white**

AMO of  
disciplin  
possibil  
epicentr  
study it  
states -

AMO ha  
Harvard  
includin  
When A  
was res  
publicat  
Japan, i  
program

Philosophy The Process Historia Sustainability **R&D** Organisation Facts and figures History Vacancies



## Sharing knowledge

Within White we have networks assigned to specific areas of expertise or sectors and these form an overarching network across all offices. The networks operate in different areas of expertise: Residential, Building Technology, Retail, Interior Design, Office, Landscape Architecture, Sustainability, Project Management, Masterplanning, Education and Healthcare. Study tours, seminars and debates provide the opportunity for all staff, clients and project partners to share knowledge and debate topical issues.



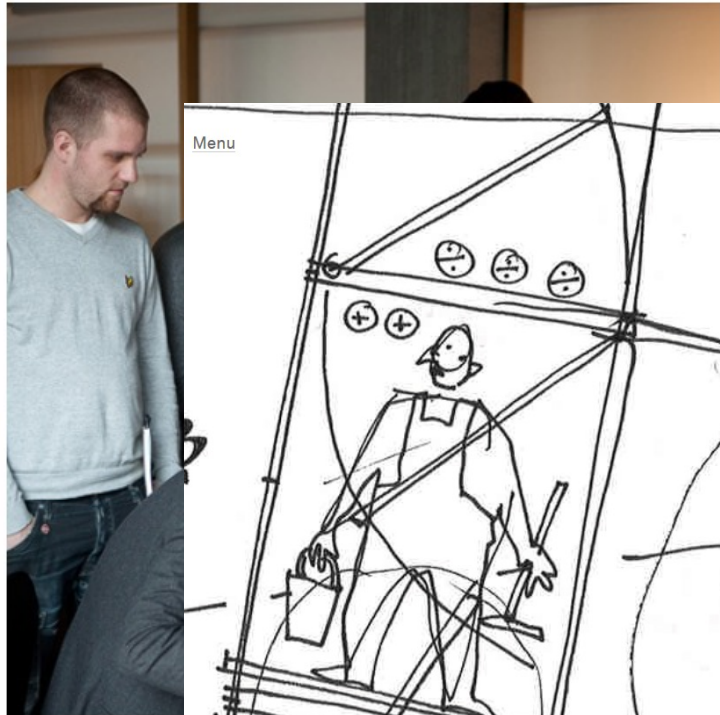
# OMA OFFICE WORK RESEARCH

OMA's completed projects include the Faena District in Miami (2016); Pierre Lessonde Pavilion, a new building for the Musée national des beaux-arts du Québec (2016); Impression 5, new home for Rotterdam's municipal offices (2015); Carag Museum of Contemporary Art in Moscow (2015); Fondazione Prada in Milan (2015); G-Star Headquarters in Amsterdam (2014); Shenzhen Stock Exchange (2013); De Rotterdam, a large mixed-use tower in the Netherlands (2013); CCTV Headquarters in Beijing (2012); New Court, the headquarters for Rothschild Bank in London (2011); Milstein Hall at Cornell University in Ithaca, New York (2011); Música **white**

AMO of  
disciplin  
possibil  
epicentr  
study it  
states -

AMO ha  
Harvard  
includin  
When A  
was res  
publicat  
Japan, i  
program

Philosophy The Process Historia Sustainability R&D Organisation Facts and figures History Vacancies



## Sharing knowledge

Within White we have networks assigned to specific areas of expertise or

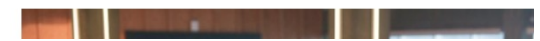


## Design Methodology

Our design methodology is rooted in our core values. We combine a wide spectrum of tools and theories with a good generosity.

[Learn more about our design methodology](#)

[www.snohetta.com](http://www.snohetta.com)



# OMA OFFICE WORK RESEARCH

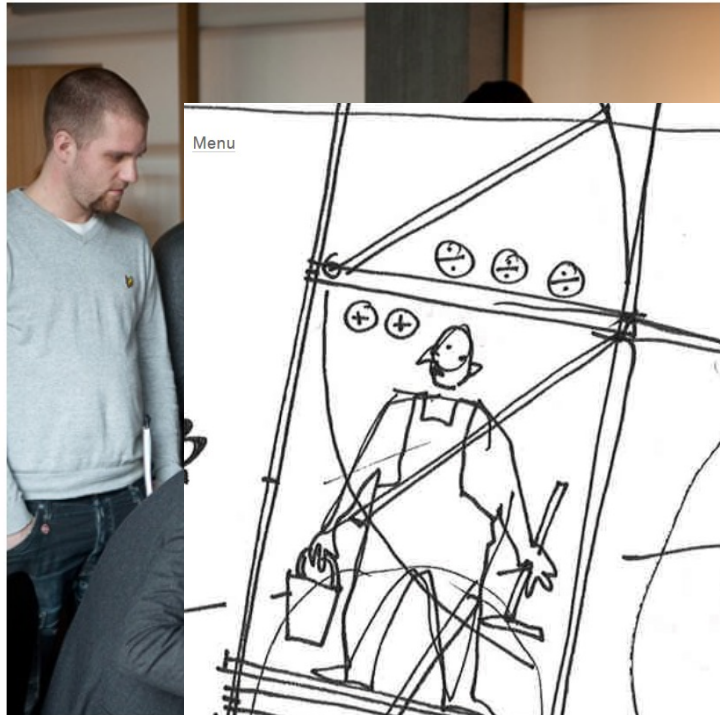
OMA's completed projects include the Faena District in Miami (2016); Pierre Lessonde Pavilion, a new building for the Musée national des beaux-arts du Québec (2016); Impulse, new home for Rotterdam's municipal offices (2015); Carag, Museum of Contemporary Art in Moscow (2015); Fondazione Prada in Milan (2015); G-Star Headquarters in Amsterdam (2014); Shenzhen Stock Exchange (2013); De Rotterdam, a large mixed-use tower in the Netherlands (2013); CCTV Headquarters in Beijing (2012); New Court, the headquarters for Rothschild Bank in London (2011); Milstein Hall at Cornell University in Ithaca, New York (2011);

Música **white**

AMO of  
disciplin  
possibil  
epicentr  
study it  
states -

AMO ha  
Harvard  
includin  
When A  
was res  
publicat  
Japan, i  
program

Philosophy The Process Historia Sustainability **R&D** Organisation Facts and figures History Vacancies



## Sharing knowledge

Within White we have networks assigned to specific areas of expertise or

## THE CHANGING SHAPE OF PRACTICE

Integrating research and design in architecture

Edited by  
**MICHAEL U. HENSEL**  
**FREDRIK NILSSON**















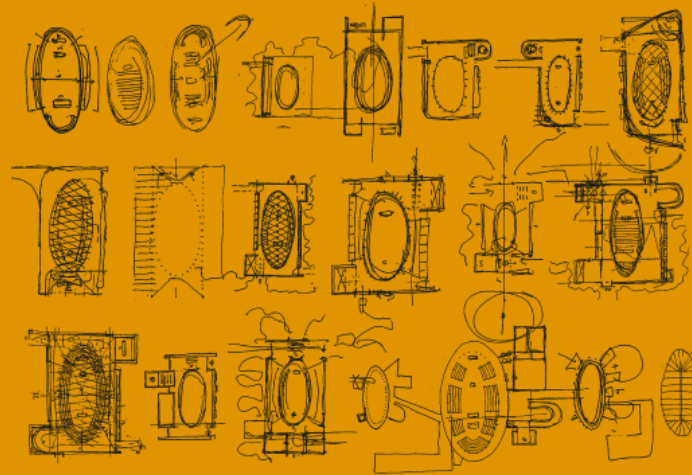




Bartlett Design Research Folios

---

# Bishop Edward King Chapel



by Níall McLaughlin Architects

---

<http://bartlettdesignresearchfolios.com/>



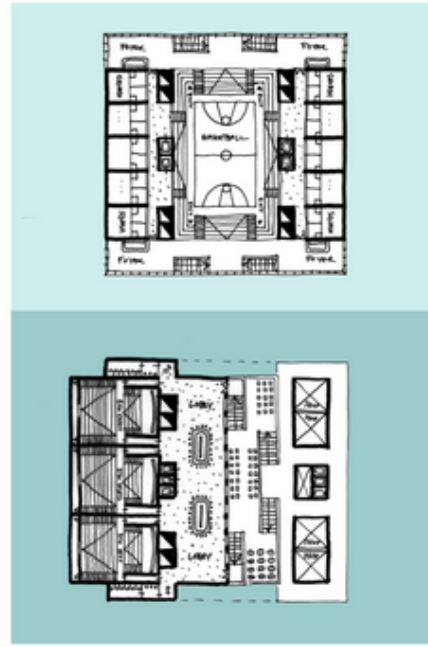
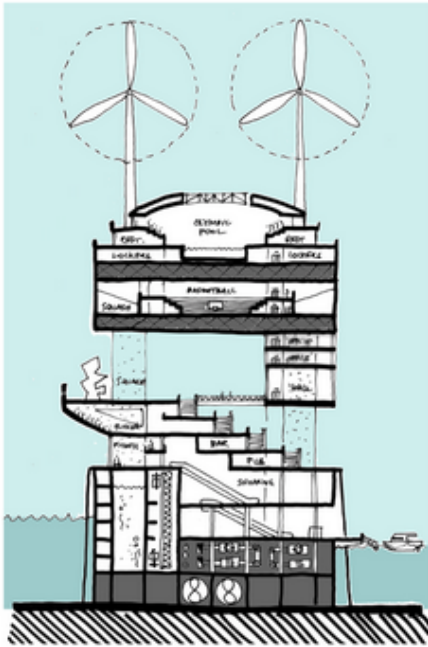
## **Questions**

- 1. To investigate the relationship between space and liturgy.**
- 2. To examine the creative use of natural light and geometrical form as an expression of the divine.**
- 3. To consider Semper's search for origins and recreate the notion of the primitive hut.**
- 4. To explore the use of innovative structures and sustainable design principles in the context of contemporary liturgical design.**

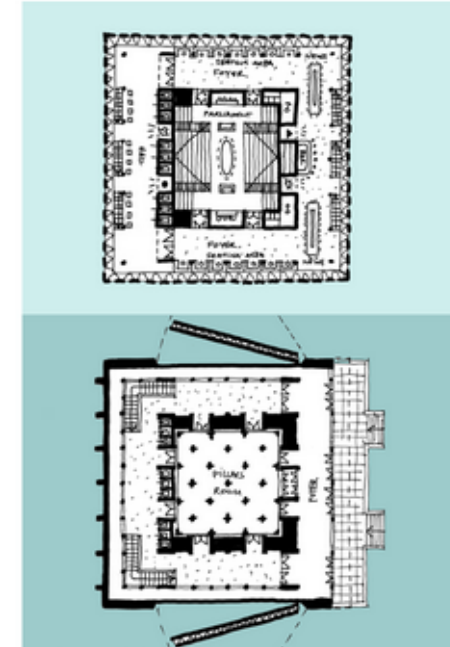
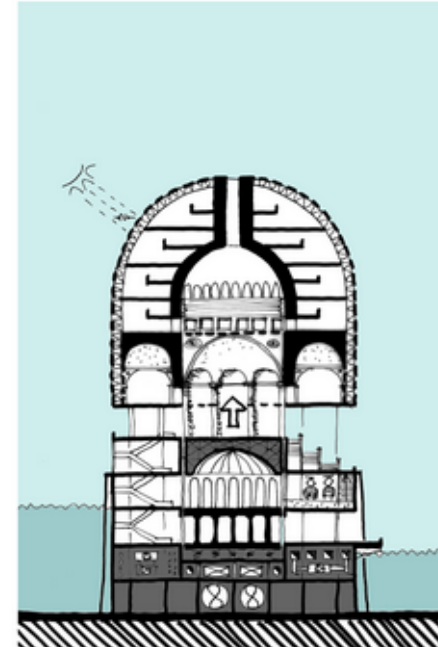
## **Methods**

- 1. A study of the etymology of liturgical terms and their poetic use in literature.**
- 2. Analysis of the site through video and sound recordings.**
- 3. Research through making in the form of site-specific tools to explore the acoustic and luminous conditions of the site.**

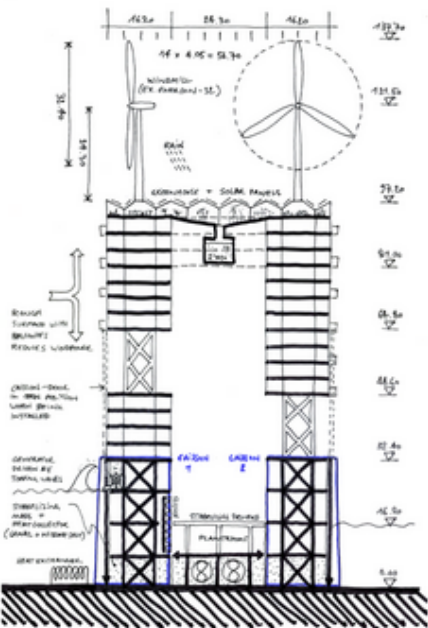




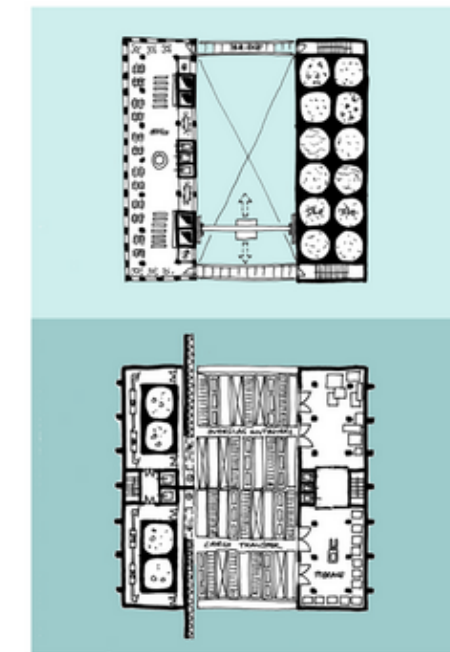
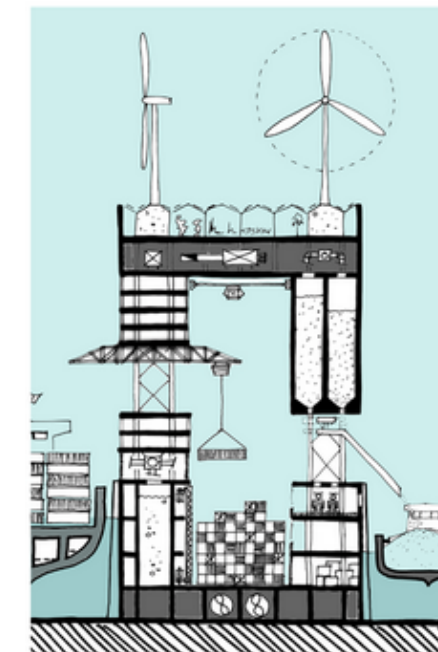
sports tower



cultural building

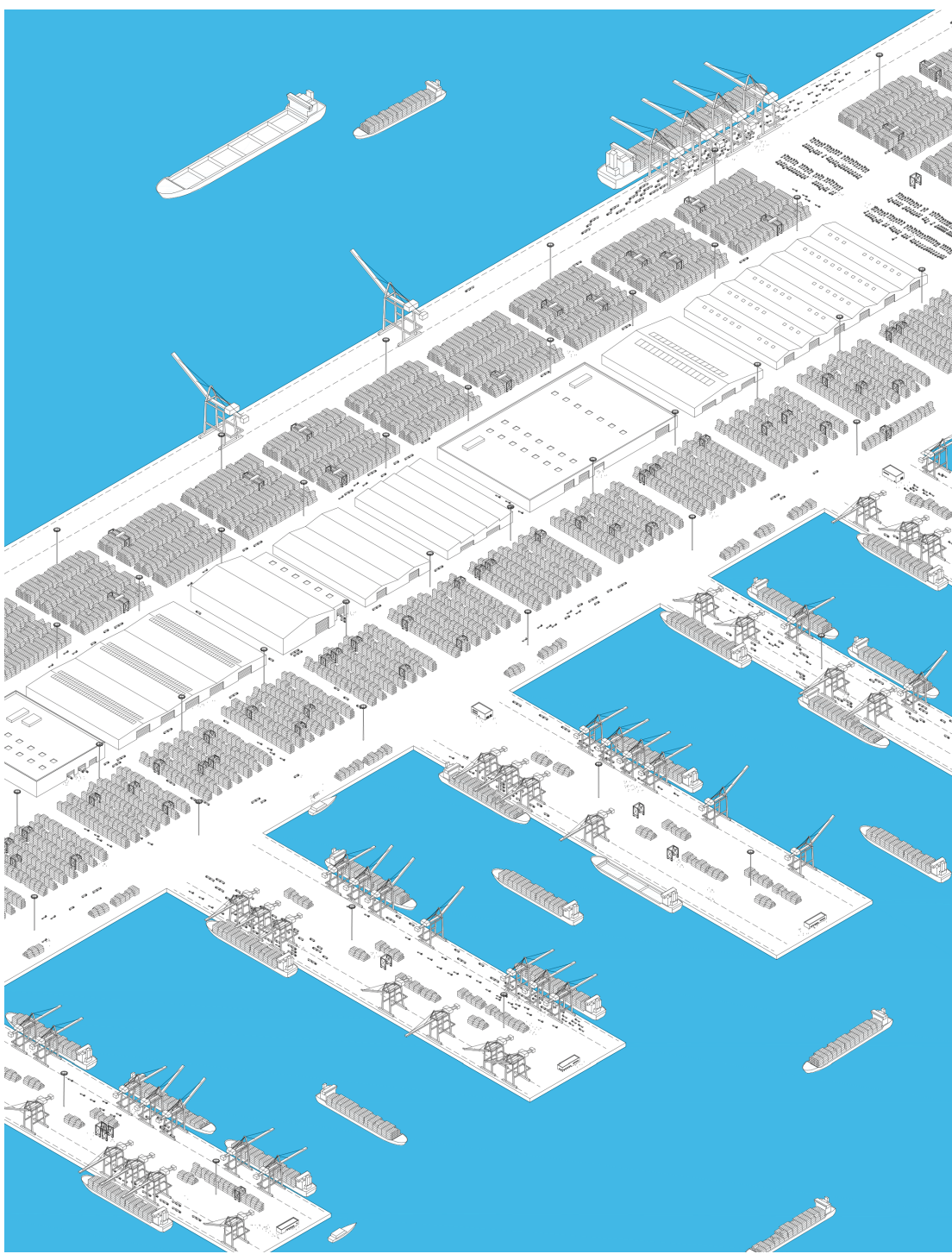


area	
wing 16,2 x 56,7	920 m2
midfloor 24,3 x 56,7	1.380 m2
roof 56,7 x 56,7	3.200 m2
'0'-shaped floor	2.600 m2
basic upper part of building	22.000 m2
basic lower part of building	16.000 m2
basic building	38.000 m2
energy	
windmill yearly production (Enercon 33)	4.500 MWh
solar power (1m2 = 100 kWh/year) roof	300 MWh
generator topping of waves	?
turbine driven by tidal streams	?
heat exchanger: temp. at -20m	1 - 10*
yearly usage by 1 inhabitant	8 MWh
yearly usage by 1 resident	1,5 MWh
yearly usage by 1 family	30 MWh
water	
yearly average of rainwater (NL)	0,78 m3/m2
yearly captivated rainwater per footprint	2.500 m3
yearly usage by 1 inhabitant	16 m3
yearly usage by 1 resident	1,5 m3
miscellaneous	
average depth sea dutch coast	20 - 30 m
average depth river / canal	12 - 16 m
ship Knock Nevis length/width	468/69 m
Knock Nevis loaded above/below water	9/25 m
nitrate salt is used for heat storage	
container TEU (twenty feet equivalent unit)	6x2,5x2,5m
1000 MWh = 85ton fuel, 800ton CO2, 0,1ton CO	



transfer / storage





uit: wisselland, zaalgids, VAI, cc Knokke-Heist

Reading, UK

22<sup>nd</sup> April 2016

session 4

## Design Research (in) Practice

*The fourth session of DR\_SoM (Design Research Series on Method) will take place at the new school of Architecture at Reading University in the UK. It will focus on Research Methods used by practitioners, architectural and other, for the study of practice. We are looking for presentations of projects and practices that frame design in a rigorous way, in terms of aims, methodologies, and forms of critical reflection that might even acknowledge and celebrate the importance of meandering and failure. Presentations are invited from architectural practitioners who are undertaking research in practice and from those who are studying the processes and methodologies of practice research. We want to hear how practitioners proceed with their design-related research, how they think about the ways in which their design approach increases knowledge about design and building.*

### Keynotes

#### Doina Petrescu

*Professor of Architecture and Design Activism,  
Head of Research, Sheffield School of Architecture*

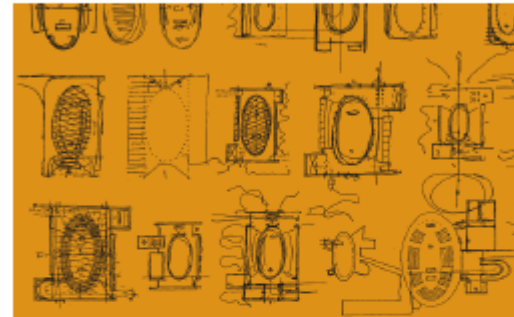


Atelier d'architecture autogérée [www.ourban.net](http://www.ourban.net)

ARENA

#### Níall McLaughlin

*Director, Níall McLaughlin Architects; Professor of  
Architectural Practice, Bartlett School of Architecture, UCL*



Bishop Edward King Chapel [www. http://bartlettdesignresearchfolios.com](http://bartlettdesignresearchfolios.com)

